

JETTING GUIDELINES FOR REEDS

Boyesen reeds tend to make engines run rich with the main jet being most affected.

- 1) Start from the top of the circuit and go down. (i.e. Main jet, clip position, pilot, air screw)
- 2) Start with needle clip in third position
- 3) Drop 1-3 sizes on the main jet

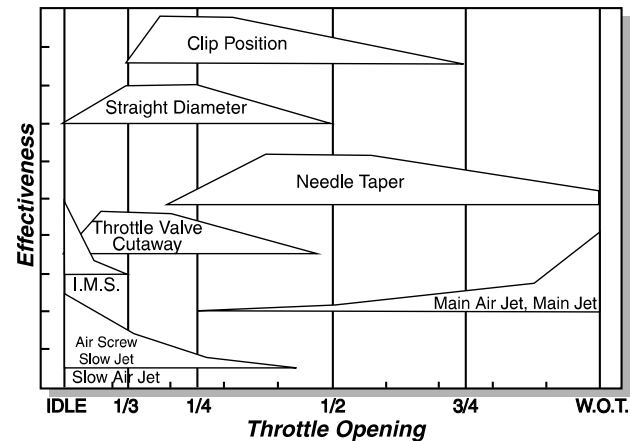
Main Jet: The main jet meters fuel flow from 3/4 to wide open throttle. The number indicates the size of the jet. To lean the circuit, use a smaller number. To richen the circuit, use a larger number. If your carburetor has the stock mainjet, it may be necessary to go down 1-3 sizes.

Jet Needle: The jet needle is mounted to the throttle slide by means of the needle clip. It meters fuel from 1/4 to 3/4 throttle. To adjust the air/fuel mixture with the jet needle, change the position of the needle clip. We suggest you start with the stock needle in the 3rd or center groove. To richen or lean the needle, see carburetor diagram.

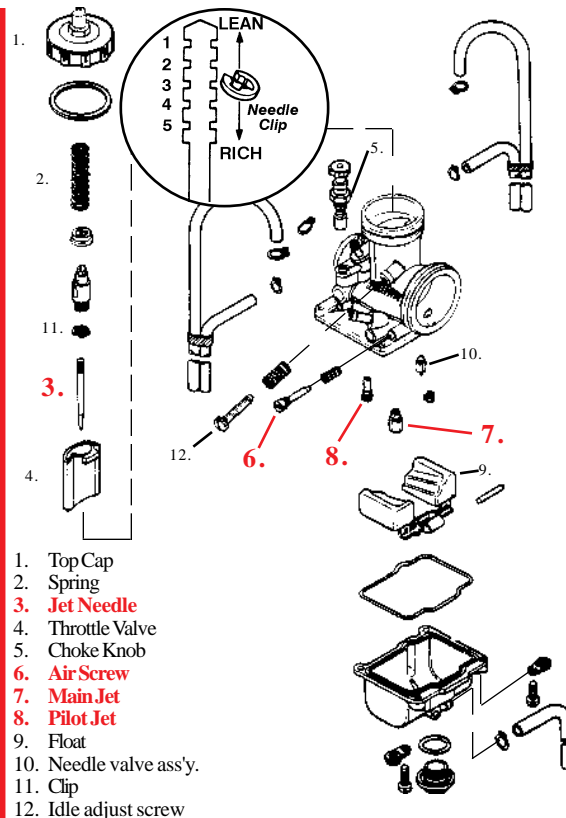
Pilot/Slow Jet: The pilot jet meters fuel from closed to 1/4 throttle. Each jet size is indicated by a number. A larger numbered pilot jet richens the air/fuel mixture. A smaller numbered pilot jet leans the air/fuel mixture.

Pilot Air Screw: The air screw, usually located on the left of the carburetor, meters the air for the pilot jet. Turning the screw clockwise richens the circuit. Turning the screw counter-clockwise leans the circuit. Air screw adjustment is effective within a range of 1/2 to 2 turns out.

Calibration Chart



KEIHIN CARBURETOR



Installation Instructions

Boyesen

DUAL STAGE REEDS

Boyesen Engineering

8 Rhoades Road
Lenhartsville, PA 19534
(610) 765-6818 • (800) 441-1177
FAX (610) 756-4102
e-mail: boyesen@early.com
<http://www.boyesen.com>

INSTRUCTIONS FOR REED REPLACEMENT

- 1) When removing reeds from packaging slit plastic film carefully. Forcing reeds out will damage them.
- 2) We do not recommend modifying the reed block, this will shorten reed life.
- 3) Alcohol/Methanol fuels require special reed material, please call for specific applications.
- 4) We recommend that the engine be clean before beginning installation.
- 5) If you have any further questions regarding installation or jetting, please call 1-800-441-1177 or 610-756-6818.

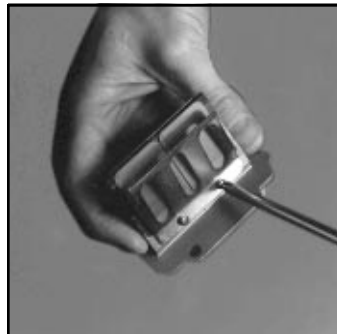
4

Remove reed valve assembly.



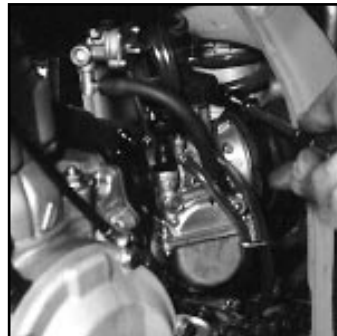
5

Remove reed retaining screws, reed stops and reeds. Inspect reed block. Make sure reed block mounting surface is flat and free from surface defects.



1

Loosen the airbox clamp and the intake manifold clamp.



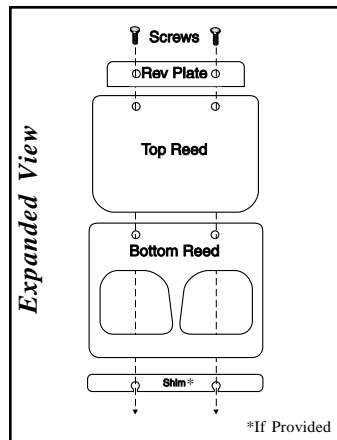
2

Pull carburetor back and away from the intake manifold. Pull carburetor forward to separate from airbox. Place carburetor aside.



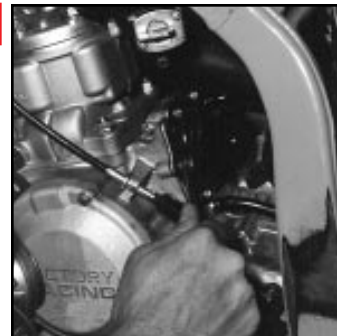
6

Install new reeds using provided rev-plate. If reeds do not lie flat, flip them over. Check that the reeds are centered on the reed block.
NOTE: If rev-plates are not provided, install reeds using stock reed stop.



3

Loosen intake manifold mounting bolts and remove intake manifold.



7

Use blue LOCTITE® to fasten reed screws. **DONOT OVERTIGHTEN SCREWS.**
Torque spec: 1Nm (0.1m kg, 0.7 ft lb)
Reinstall reed valve assembly by reversing previous procedures.

