

LOCATION F=Front, M=Middle, R=Rear		
ARCTIC CAT		SIZE (OD X ID)
All Models '89-98	R	6 3/8" x 3/4"
4 Stroke Trail 2003	F/M	5.63" x .787"
Bearcat 340/440/550/WT '95-00	F/M	5 11/16" x 5/8"
Bearcat '95-97	R	6 3/8" x 3/4"
Bearcat 570 2004-05	F/M	5.63" x .787"
	R	7.125" x .787"
	---	6.38" x .787"
Cheetah 1972-78	R	7 1/8" x 3/4"
Cheetah F/C & L/C '94	F/M	5 3/8" x 5/8"
Cheetah F/C & L/C '86-89	F/M	5 3/8" x 5/8"
Cheetah F/C & L/C 1986-89	F/M	5 3/8" x 3/4"
Cheetah FC/LC 1986-88	R	6 3/8" x 3/4"
Cheetah '87-98	F/M	5 11/16" x 5/8"
Cheetah 1989	R	5 7/8" x 3/4"
Cheetah Touring '88	R	6 3/8" x 3/4"
Cheetah Touring '88-92	F/M	5 11/16" x 5/8"
Cheetah 340 1994	F/M	5 11/16" x 5/8"
	R	6 3/8" x 3/4"
Cougar 1968	R	7 1/8" x 3/4"
Cougar 1985-98	F/M	5 3/8" x 5/8"
	R	6 3/8" x 3/4"
Cougar 1986-89	F/M	5 3/8" x 3/4"
Cougar Mtn Cat '90	F/M	5 11/16" x 5/8"
Cougar, Cougar Mtn Cat '95-99	F/M	5 11/16" x 5/8"
Cross Country Cat 340 1976	F/M	5 3/8" x 3/4"
Cross Country Cat 1976	F/M	5 1/4" x 3/4"
Crossfire 2004-07	F/M	5.63" x .787"
El Tigre F/A 1978-80	R	5 7/8" x 3/4"
El Tigre F/A 1978-81	F/M	4 1/4" x 5/8"
El Tigre L/C 1978-84	F/M	4 1/4" x 5/8"
El Tigre '73-74	R	6 3/8" x 3/4"
El Tigre 1985-88	F/M	5 3/8" x 5/8"
El Tigre 1986-89	F/M	5 3/8" x 3/4"
El Tigre 5000 '81	R	6 3/8" x 3/4"
El Tigre 5000 F/A '81	F/M	5 11/16" x 5/8"
El Tigre 5000 '86-88	R	6 3/8" x 3/4"
El Tigre 6000 1979-89	R	6 3/8" x 3/4"
El Tigre 6000 L/C '78-84	F/M	5 11/16" x 5/8"
El Tigre EXT/MC/Special '89-92	F/M	5 11/16" x 5/8"
El Tigre "Z" 1977	R	7 1/8" x 3/4"
EXT, EXT Special, King Kat '71	R	7 1/8" x 3/4"
EXT '72-73	R	6 3/8" x 3/4"
Firecat - All 2003-04	R	7.125" x 25mm
Firecats 2005-06, F Series 2007	F/M	5.63" x .787"
	R	7.125" x .787"
Jag '75-77	R	6 3/8" x 3/4"
Jag 1979-81	F/M	4 1/4" x 5/8"
	R	5 7/8" x 3/4"
Jag '85-86	F/M	5 11/16" x 5/8"
Jag 1985-86	F/M	4 1/4" x 5/8"
Jag '87-90	F/M	5 3/8" x 5/8"
Jag '85-98	R	6 3/8" x 3/4"
Jag Deluxe 1988-89	R	6 3/8" x 3/4"
Jag 4000 Long Track '81	F/M	5 11/16" x 5/8"
Jag/Jag AFS 1986-89	F/M	5 3/8" x 3/4"
Jag AFS '89	R	6 3/8" x 3/4"
Jag / Jag AFS 1991	F/M	5 3/8" x 3/4"
Jag AFS / Dlx / LC / LT / Mtn Cat/Spec '91-99	F/M	5 11/16" x 5/8"
Jag Long Track 1981	R	6 3/8" x 3/4"
Jag 340/440/Dlx 1999	R	6 3/8" x 3/4"
Kitty Cat 1973-99	F/M	4 1/4" x 5/8"
Lynx 1971-74	R	7 1/8" x 3/4"
Lynx 2000S, 2000T 1979	F/M	5 3/8" x 3/4"
Lynx '75-80	R	6 3/8" x 3/4"
Lynx '91-93	F/M	5 3/8" x 5/8"
Lynx/Deluxe '91-93	F/M	5 11/16" x 5/8"
	R	6 3/8" x 3/4"
Lynx Mtn Cat '92-93	F/M	5 11/16" x 5/8"
	R	6 3/8" x 3/4"
Lynx 2000 1975	F/M	5 1/4" x 3/4"
Mtn Cat - All 2003-04	F/M	5.63" x .787"
Mtn Cat 570 2003	R	6.38" x .787"
Mtn Cat 600 2003	R	6.38" x .787"
Pantera 1975	R	7 1/8" x 3/4"
Pantera 1978-81	F/M	4 1/4" x 5/8"
Pantera '79-98	R	6 3/8" x 3/4"

LOCATION F=Front, M=Middle, R=Rear		
ARCTIC CAT		SIZE (OD X ID)
Pantera '80-81	F/M	5 11/16" x 5/8"
Pantera '85-88	F/M	5 3/8" x 5/8"
Pantera 1985-98	R	6 3/8" x 3/4"
Pantera 1985	F/M	4 1/4" x 5/8"
Pantera '85,90-98	F/M	5 11/16" x 5/8"
Pantera 1986-89	F/M	5 3/8" x 3/4"
Pantera 1990	F/M	5 11/16" x 5/8"
Pantera 2000	F/M	5 11/16" x 5/8"
Pantera F/A 1976-78	F/M	5 1/4" x 3/4"
Pantera F/A, F/C 1977	F/M	5 3/8" x 3/4"
Pantera F/A 1978	F/M	5 3/8" x 3/4"
Pantera F/C 1977	F/M	5 1/4" x 3/4"
Pantera 5000 1976	F/M	5 3/8" x 3/4"
Pantera 550 / 600 EFI 2005	F/M	5.63" x .787"
	R	6.38" x .787"
Panther 1967-78	R	7 1/8" x 3/4"
Panther 1979-89	R	6 3/8" x 3/4"
Panther 1979-86	F/M	4 1/4" x 5/8"
Panther '80-81	F/M	5 11/16" x 5/8"
Panther '84-86	F/M	5 11/16" x 5/8"
Panther '87-89	F/M	5 3/8" x 5/8"
Panther 1986-89	F/M	5 3/8" x 3/4"
Panther/Dlx/LC/Mtn Cat '91-99	F/M	5 11/16" x 5/8"
Panther 340/440/550 2000	F/M	5 11/16" x 5/8"
Panther 340/440/550 1999-00	R	6 3/8" x 3/4"
Panther 570 2005	F/M	5.63" x .787"
Panther - All 2004-05	R	6.38" x .787"
Powder Spl 500/600/700 '00	F/M	5 11/16" x 5/8"
Powder Spl 500/600/700 '99-00	R	6 3/8" x 3/4"
Prowler '90-92	F/M	5 11/16" x 5/8"
Prowler 2-up '95	F/M	5 11/16" x 5/8"
Puma 1970-73	R	7 1/8" x 3/4"
Puma '94-97	R	6 3/8" x 3/4"
Puma/Dlx '94-96	F/M	5 11/16" x 5/8"
Puma 2-up '95-99	F/M	5 11/16" x 5/8"
Sabercat - All 2004	F/M	5.63" x .787"
	R	7.125" x 25mm
Sabercat 2005-06	F/M	5.63" x .787"
	R	7.125" x .787"
Super Jag '87-89	R	6 3/8" x 3/4"
Super Jag 1987-90	F/M	5 3/8" x 3/4"
Super Jag '87-92	F/M	5 11/16" x 5/8"
Super Jag '88-89	F/M	5 3/8" x 5/8"
T660 / Turbo 2004-05	F/M	5.63" x .787"
	R	6.38" x .787"
Thundercat '95-00	F/M	5 11/16" x 5/8"
Thundercat 1999-00	R	6 3/8" x 3/4"
Trail Cat 1979-81	R	5 7/8" x 3/4"
Triple Touring 2000	F/M	5 11/16" x 5/8"
Triple Touring 1999-00	R	6 3/8" x 3/4"
VIP 1974	R	7 1/8" x 3/4"
Wildcat 1986-89	F/M	5 3/8" x 3/4"
Wildcat '88	F/M	5 3/8" x 5/8"
Wildcat '88-89	R	6 3/8" x 3/4"
Wildcat '89-92	F/M	5 11/16" x 5/8"
Wildcat Mtn Cat '90-92	F/M	5 11/16" x 5/8"
Z 370 2000	F/M	5 11/16" x 5/8"
Z 370 1999-00	R	6 3/8" x 3/4"
Z 370 / 440 / 570 2004-05	F/M	5.63" x .787"
	R	6.38" x .787"
ZL/Z 440 2000	F/M	5 11/16" x 5/8"
ZL/Z 440 1999-00	R	6 3/8" x 3/4"
ZL/ZR 500/600 2000	F/M	5 11/16" x 5/8"
ZL/ZR 500/600 1999-00	R	6 3/8" x 3/4"
ZL 550, 600, 800 2003	F/M	5.63" x .787"
ZR's '95-99	F/M	5 11/16" x 5/8"
ZRT 600,800 '95-00	F/M	5 11/16" x 5/8"
	R	6 3/8" x 3/4"
ZR 500/600 '99	F/M	5 11/16" x 5/8"
ZR 440 Sno Pro 2002-04	F/M	5.63" x .787"
ZR 580 1995-98	R	6 3/8" x 3/4"
ZR 800 2003	F/M	5.63" x .787"
ZR 900 - All 2003-05	F/M	5.63" x .787"
ZR 900 2005	R	6.38" x .625"

LOCATION F=Front, M=Middle, R=Rear		
POLARIS		SIZE (OD X ID)
All Models 1993-94	F/M	5 1/4" x 3/4"
All Models 1993-98	R	6 3/8" x 3/4"
All Models 1993-99	F/M	5 3/8" x 3/4"
Apollo 1979-80	F/M	5 11/16" x 5/8"
Apollo 340 1979-80	R	6 3/8" x 3/4"
Centurion 500 1979	F/M	4 5/8" x .984"
Centurion 500 1980	F/M	5 3/8" x 3/4"
Centurion 1979-80	R	6 3/8" x 3/4"
Centurion 1980	F/M	4 1/4" x 5/8"
Centurion 1980	F/M	5 1/4" x 3/4"
Centurion Indy 1981-82	F/M	5 1/4" x 3/4"
	R	6 3/8" x 3/4"
Centurion Indy 500 1981-82	F/M	4 5/8" x .984"
Centurion Indy 500 1981-82	F/M	5 3/8" x 3/4"
Charger 1971-73	R	7 1/8" x 3/4"
Cobra 1978-79	R	6 3/8" x 3/4"
Colt / SS 1972-78	F/M	5 11/16" x 5/8"
Cross Country (XC) 1983	F/M	5 3/8" x 3/4"
Custom II 1974	R	6 3/8" x 3/4"
Cutlass 340 1981	F/M	5 1/4" x 3/4"
Cutlass 340 1981	F/M	5 3/8" x 3/4"
Cutlass SS 440 1981-82	F/M	5 1/4" x 3/4"
Cutlass SS 440, 440E 1981	F/M	5 3/8" x 3/4"
Cutlass SS 440 1982	F/M	5 3/8" x 3/4"
Cutlass 1982	F/M	5 1/4" x 3/4"
Cutlass 1981-82	R	6 3/8" x 3/4"
Galaxy 1980-81	F/M	4 1/4" x 5/8"
Galaxy 1980-81	F/M	5 1/4" x 3/4"
Galaxy 1980	R	6 3/8" x 3/4"
Galaxy 340 1980	F/M	5 3/8" x 3/4"
Galaxy 440, 440E 1980	F/M	5 3/8" x 3/4"
Galaxy 440 (w/ rubber track) '80	F/M	5 3/8" x 3/4"
Galaxy 440 1981	F/M	5 3/8" x 3/4"
Gemini 1979-81	F/M	5 11/16" x 5/8"
Gemini 1983	F/M	5 1/4" x 3/4"
Gemini 1983	F/M	5 3/8" x 3/4"
Electra 1974-77	R	6 3/8" x 3/4"
Indy 400 1984	R	6 3/8" x 3/4"
Indy 400 1984	F/M	4 5/8" x .984"
Indy 400 1984	F/M	5 3/8" x 3/4"
Indy 400 1984-86	F/M	5 1/4" x 3/4"
Indy 400 1984-86	TRC	4.56" x .625"
Indy 400 1985-86	F/M	5 3/8" x 3/4"
	R	6 3/8" x 3/4"
Indy 400/133 SKS 1987	F/M	5 1/4" x 3/4"
	R	6 3/8" x 3/4"
	F/M	5 3/8" x 3/4"
	TRC	4.56" x .625"
Indy 400/Classic/SKS 1988	F/M	5 1/4" x 3/4"
	R	6 3/8" x 3/4"
	F/M	5 3/8" x 3/4"
Indy 400 1989	F/M	5 3/8" x 3/4"
	TRC	4.56" x .625"
Indy 400 1989-90	F/M	5 1/4" x 3/4"
	R	6 3/8" x 3/4"
Indy 400 1990	F/M	5 3/8" x 3/4"
Indy 400 1990-91	TR	5.6" x .625"
Indy 400/XC 1991-92	F/M	5 1/4" x 3/4"
Indy 400/XC 1991-92	F/M	5 3/8" x 3/4"
Indy 400/XC 1992	R	6 3/8" x 3/4"
Indy 400 1996		6 3/8" x 20mm
Indy 400/Classic/SKS 1988	TRC	4.56" x .625"
Indy 500 1990-92	TR	5.6" x .625"
Indy 500/Classic/SKS/SP '89-92	F/M	5 1/4" x 3/4"
Indy 500/Classic/SKS/SP '89-90	R	6 3/8" x 3/4"
Indy 500/Classic/SKS/SP 1989	TRC	4.56" x .625"
	F/M	5 3/8" x 3/4"
Indy 500/Classic/SK/SP 1990	F/M	5 3/8" x 3/4"
Indy 500/Classic/SKS/SP '91-92	F/M	5 3/8" x 3/4"
Indy 500/Classic/SKS/SP 1992	R	6 3/8" x 3/4"
Indy 500 RMK/SKS 1997		6 3/8" x 20mm
Indy 500 XC/SP 1999	F/M	5 3/8" x 3/4"
Indy 600 1983	F/M	4 5/8" x .984"
Indy 600 1983	F/M	5 3/8" x 3/4"
Indy 600/XC/Trail 1983	R	6 3/8" x 3/4"

Refer to page 129 for idler wheel photos

LOCATION F=Front, M=Middle, R=Rear		
POLARIS	SIZE (OD X ID)	
Indy 600 1984	F/M	5 1/4" x 3/4"
	R	6 3/8" x 3/4"
	F/M	4 5/8" x .984"
	TRC	4.56" x .625"
Indy 600 Trail 1984	F/M	5 3/8" x 3/4"
Indy 600 1985-86	R	6 3/8" x 3/4"
Indy 600/SE 1985-86	F/M	5 1/4" x 3/4"
Indy 600/SE 1985-86	F/M	5 3/8" x 3/4"
Indy 600/SE 1985	TR C	4.56" x .625"
Indy 600/LE 1986	TR C	4.56" x .625"
Indy 600 Sport 1987	F/M	5 1/4" x 3/4"
Indy 600 1987	R	6 3/8" x 3/4"
Indy 600 1987	F/M	5 3/8" x 3/4"
Indy 600 1987	TR C	4.56" x .625"
Indy 600 1990-91	TR	5.6" x .625"
Indy 600 XCR/SP 1996		6 3/8" x 20mm
Indy 600/XC/Trail 1983	F/M	5 1/4" x 3/4"ID
Indy 600 XC 1997		6 3/8" x 20mm
Indy 600 XC/SP 1999	F/M	5 3/8" x 3/4"
Indy 650/RXL/SKS 89-90	F/M	5 1/4" x 3/4"
Indy 650/SKS 1988	F/M	5 1/4" x 3/4"
	F/M	5 3/8" x 3/4"
	TR C	4.56" x .625"
Indy 650/SKS 1988-89	R	6 3/8" x 3/4"
Indy 650/SKS 1989	F/M	5 3/8" x 3/4"
	TR C	4.56" x .625"
Indy 650/RXL/SKS 91-92	F/M	5 1/4" x 3/4"
Indy 650/RXL/SKS 90-92	R	6 3/8" x 3/4"
Indy 650/RXL/SKS 90-92	F/M	5 3/8" x 3/4"
Indy 700 XC/SP 1999	F/M	5 3/8" x 3/4"
Indy GT 1993-94	TR C	4.56" x .625"
Indy Lite 1991-92	F/M	5 1/4" x 3/4"
Indy Lite 1991-92	F/M	5 3/8" x 3/4"
Indy Lite 1991-98	TR C	4.56" x .625"
Indy Lite/GT 1991-92	TR C	4.56" x .625"
Indy Lite/Starlite 1991-93	F/M	5 11/16" x 5/8"
Indy Lite GT 1992	R	6 3/8" x 3/4"
Indy Lite/Deluxe 1993-94	TR C	4.56" x .625"
Indy Long Track 1983	F/M	5 3/8" x 3/4"
Indy Long Track 1983-84	F/M	5 1/4" x 3/4"
Indy Long Track 1983-86	R	6 3/8" x 3/4"
Indy Long Track 1984	F/M	5 3/8" x 3/4"
Indy Long Track 1984	F/M	4 5/8" x .984"
Indy Long Track 1984-86	TR C	4.56" x .625"
Indy Long Track 1985-91	F/M	5 11/16" x 5/8"
Indy Long Track/RLR '87	R	6 3/8" x 3/4"
	TR C	4.56" x .625"
Indy LT Reverse 1988	TR C	4.56" x .625"
Indy LT Reverse '88-89	R	6 3/8" x 3/4"
Indy LT Reverse 1989	TRC	4.56" x .625"
Indy Sport 1983	F/M	5 1/4" x 3/4"
Indy Sport 1983	F/M	5 3/8" x 3/4"
Indy Sport 1987	R	6 3/8" x 3/4"
	F/M	5 3/8" x 3/4"
	TRC	4.56" x .625"
Indy Sport 1988	F/M	5 1/4" x 3/4"
	R	6 3/8" x 3/4"
	F/M	5 3/8" x 3/4"
	TRC	4.56" x .625"
Indy Sport/GT 1989	TRC	4.56" x .625"
Indy Sport/GT 1989-92	F/M	5 1/4" x 3/4"
	R	6 3/8" x 3/4"
Indy Sport/GT 1989-92	F/M	5 3/8" x 3/4"
Indy Sport GT 1990-91	TR	5.6" x .625"
Indy Sport 1993-98	TRC	4.56" x .625"
Indy Sport/Super Sport/Tour '97		6 3/8" x 20mm
Indy SS 1983-84	F/M	5 1/4" x 3/4"
Indy SS 1984	F/M	5 3/8" x 3/4"
Indy SS 1984	F/M	4 5/8" x .984"
Indy SS 1984-86	TRC	4.56" x .625"
Indy SS 1985-86	F/M	5 11/16" x 5/8"
	R	6 3/8" x 3/4"
Indy Star 1983	F/M	5 1/4" x 3/4"
Indy Star 1983	F/M	5 3/8" x 3/4"
Indy Star 1984-90	TRC	4.56" x .625"

LOCATION F=Front, M=Middle, R=Rear		
POLARIS	SIZE (OD X ID)	
Indy Star/LT 1984	F/M	5 1/4" x 3/4"
	R	6 3/8" x 3/4"
	F/M	5 3/8" x 3/4"
	F/M	4 5/8" x .984"
	TRC	4.56" x .625"
Indy Star 1985-91	F/M	5 11/16" x 5/8"
Indy Starfire 1976	R	7 1/8" x 3/4"
Indy Starlite 1991-92	TRC	4.56" x .625"
Indy Starlite 1992	R	6 3/8" x 3/4"
Indy Starlite/GT 1993-94	TRC	4.56" x .625"
Indy Starlite 1991-98	TRC	4.56" x .625"
Indy Startrak 1987	F/M	5 3/8" x 3/4"
	R	6 3/8" x 3/4"
Indy Startrak 1987-90	F/M	5 1/4" x 3/4"
Indy Startrak 1987-90	TRC	4.56" x .625"
Indy Startrak 1988	F/M	5 3/8" x 3/4"
Indy Startrak 1988-90	R	6 3/8" x 3/4"
Indy Startrak 1989-90	F/M	5 3/8" x 3/4"
Indy Storm RMK/SKS 1996		6 3/8" x 20mm
Indy Supertrak 1989-90	TRC	4.56" x .625"
Indy Supertrak 1989-92	F/M	5 1/4" x 3/4"
Indy Supertrak 1991-92	F/M	5 3/8" x 3/4"
Indy Supertrak 1991-92	TRC	4.56" x .625"
Indy Supertrak 1992	R	6 3/8" x 3/4"
Indy Super Sport (SS) 1983	F/M	5 3/8" x 3/4"
Indy Super Sport 1998	F/M	5 3/8" x 3/4"
Indy Trail 1983	F/M	4 5/8" x .984"
Indy Trail 1983	F/M	5 3/8" x 3/4"
Indy Trail 1984	R	6 3/8" x 3/4"
	F/M	4 5/8" x .984"
Indy Trail 1984-86	F/M	5 1/4" x 3/4"
Indy Trail 1984-86	TRC	4.56" x .625"
Indy Trail 1985-86	F/M	5 3/8" x 3/4"
	R	6 3/8" x 3/4"
Indy Trail/ES/133 SKS 1987	F/M	5 3/8" x 3/4"
	R	6 3/8" x 3/4"
	TRC	4.56" x .625"
	F/M	5 1/4" x 3/4"
Indy Trail/ES/SKS/Dix/Spl '88	F/M	5 1/4" x 3/4"
	R	6 3/8" x 3/4"
	F/M	5 3/8" x 3/4"
	TRC	4.56" x .625"
Indy Trail/Dix/ES/SKS/SP '89	F/M	5 3/8" x 3/4"
	TRC	4.56" x .625"
Indy Trail/Dix/Supertrak '90	F/M	5 3/8" x 3/4"
	R	6 3/8" x 3/4"
Indy Trail Supertrak 1989	F/M	5 3/8" x 3/4"
Indy Trail/Dix/SKS/SP 1989	R	6 3/8" x 3/4"
Indy Trail/Dix 1989-92	F/M	5 1/4" x 3/4"
Indy Trail/Dix 1990-92	TR	5.6" x .625"
Indy Trail/Dix 1991-92	F/M	5 3/8" x 3/4"
Indy Trail/Dix 1992	R	6 3/8" x 3/4"
Indy Trail, 440 1992	TR	5.6" x .625"
Indy Trail/Touring 1997		6 3/8" x 20mm
Indy Trail / Dix / Touring/WT/GT/LX '98	F/M	5 3/8" x 3/4"
Indy Ultra SP 1996		6 3/8" x 20mm
Indy Widetrak 1989-92	F/M	5 1/4" x 3/4"
Indy Widetrak 1990	R	6 3/8" x 3/4"
Indy Widetrak 1990-92	F/M	5 3/8" x 3/4"
Indy Widetrak 1992	R	6 3/8" x 3/4"
Indy XLT/RMK/SKS 1997		6 3/8" x 20mm
Mustang1971-73	R	7 1/8" x 3/4"
Sprint 1986	F/M	5 11/16" x 5/8"
Sprint/ES 1986-90	TRC	4.56" x .625"
SS Charger 1972	R	7 1/8" x 3/4"
TC 1975	F/M	5 1/4" x 3/4"
TX Charger 1970-71	R	7 1/8" x 3/4"
TX Racer 1972	F/M	5 11/16" x 5/8"
TX 1972	R	7 1/8" x 3/4"
TX 1974-75	R	6 3/8" x 3/4"
TX 1976-79	R	7 1/8" x 3/4"
TX 1980	F/M	4 1/4" x 5/8"
	R	6 3/8" x 3/4"

LOCATION F=Front, M=Middle, R=Rear		
POLARIS	SIZE (OD X ID)	
TXC 340 1979	F/M	4 5/8" x .984"
TXC 340 1980	F/M	5 3/8" x 3/4"
TXC 440C 1981	F/M	5 3/8" x 3/4"
TXL 340 1979	F/M	4 5/8" x .984"
TXL 340 1980	F/M	5 3/8" x 3/4"
TXL 340 1982	F/M	5 3/8" x 3/4"
TXL Indy 340 1980	F/M	4 5/8" x .984"
TXL Indy 340 1980	F/M	5 3/8" x 3/4"
TXL Indy 340 1981-82	F/M	4 5/8" x .984"
TXL Indy 340 1982	F/M	5 3/8" x 3/4"
TXC, TXL 1980-82	F/M	4 1/4" x 5/8"
TXC/TXL/TXL Indy 340 '80-82	F/M	5 1/4" x 3/4"
TXL 340, TXL Indy 340 1981	F/M	5 3/8" x 3/4"
TXC, TXL, TXL Indy '79-82	R	6 3/8" x 3/4"
TXC 440 1982	F/M	5 3/8" x 3/4"

LOCATION F=Front, M=Middle, R=Rear		
YAMAHA	SIZE (OD X ID)	
All Models (except Bravo) '81-93	R	7"OD x 20mm
BR 250/T/TX 1982-00	F/M	5 1/8"OD
BR 250 1985-99	F/M	3.325" OD
Bravo 1982-91	R	7 1/2"OD
CF 300 1986-89	R	7"OD x 20mm
CF 300 1986-89	F/M	3.325" OD
CF 300 1986-89	F/M	5 1/8"OD
CS 340 1989-99	R	7"OD x 20mm
CS340 1989-99	F/M	5 1/8"OD
EC 340 1981-84	R	7 1/2"OD
EC 340 1985-88	R	7"OD x 20mm
EC 340 1985-88	F/M	5 1/8"OD
EC 540 1979-80	F/M	5 1/8"OD
EC 540F 1982	R	7"OD x 20mm
Enticer 250 1977-81	R	7 1/2"OD
Enticer 340 1978-84	R	7 1/2"OD
Enticer 300 1979-84	R	7 1/2"OD
Enticer 340 1985-88	R	7"OD x 20mm
Enticer 340T 1982-88	R	7 1/2"OD
Enticer 340TRK 1986	R	7 1/2"OD
ET250/340 1977-81	F/M	5 1/8"OD
ET300/340 1981-88	F/M	5 1/8"OD
ET 340 1983-88	F/M	3.325" OD
ET 400 1989-91	R	7 1/2"OD
ET 400 1990-91	F/M	3.325" OD
ET 400 1990-99	F/M	5 1/8"OD
ET 410 1990-99	F/M	5 1/8"OD
ET 410 1992-97	F/M	3.325" OD
EW643 1972-73	F/M	5 1/8"OD
Exciter 340 1976-78	R	7 1/2"OD
EX 340/440 1977-81	F/M	5 1/8"OD
EX 440 1976-81	R	7 1/2"OD
EX 570 1987-92	R	7"OD x 20mm
EX 570 1991-93	F/M	3.325" OD
EX 570/E 1987-93	F/M	5 1/8"OD
GP/GPX 1972-78	F/M	5 1/8"OD
GP 1975-78	R	7 1/2"OD
GPX 1975	R	7 1/2"OD
GS 1975-78	F/M	5 1/8"OD
GS 340 1976-78	R	7 1/2"OD
Ovation 1989-99	R	7"OD x 20mm
Phazer 480 1984-98	R	7"OD x 20mm
Phazer 500 1999-00	F/M	5 1/4" x 1"
	R	7"OD x 20mm
PR 440 1976-77	R	7 1/2"OD
	F/M	5 1/8"OD
PZ480/E/ESS/SS/ST/STA 84-99	F/M	5 1/8"OD
PZ 480 1990-98	F/M	3.325" OD
PZ 500/Mtn 1999-00	F/M	5 1/8"OD
SL 1972-74	F/M	5 1/8"OD
SM292 1973-74	F/M	5 1/8"OD
SR 1971-73	F/M	5 1/8"OD
SR 540 1980-91	R	7"OD x 20mm
	F/M	5 1/8"OD
SRV 540 1985-91	F/M	3.325" OD
SRX440 1978-81	F/M	5 1/8"OD

Refer to page 129 for idler wheel photos

LOCATION		
F=Front		
M=Middle		
R=Rear		
YAMAHA		
		SIZE (OD X ID)
SRX 440 1978-79	R	7 1/2" OD
SRX 440 1980-81	R	7" OD x 20mm
SRX 1998-00	R	7" OD x 20mm
	F/M	5 1/4" x 1"
SRX 600 1998-99	F/M	3.325" OD
SRX 700 1998-00	F/M	3.325" OD
SS 440 1980-83	R	7" OD x 20mm
	F/M	5 1/8" OD
SSR440 1978	F/M	5 1/8" OD
SV 80 1989-90	R	7" OD x 20mm
SV80/125 1988-91	F/M	5 1/8" OD
SW443 1973	F/M	5 1/8" OD
SXR 500/600/700 2000	F/M	3.325" OD
TL 433G 1975	R	7 1/2" OD
TL/TW433 1974-75	F/M	5 1/8" OD
V-Max 540 1983-91	F/M	3.325" OD
V-Max 750/800 1992-97	F/M	3.325" OD
V-Max 500/600/700 1994-00	F/M	3.325" OD
V-Max 500,600,800 1997	R	7 1/8" x 25mm
V-Max 600SX,700SX 1997	R	7 1/8" x 25mm
V-Max 500,600,700 XT/XTC's 1998	R	7 1/8" x 25mm
V-Max 600 SX, 700 SX 1998	R	7 1/8" x 25mm
V-Max 500,600,700 ER/Dlx '99-00	R	7 1/8" x 25mm
V-Max - All 1998,00	F/M	5 1/4" x 1"
	R	7" OD x 20mm
V-Max 4 1992	R	7" OD x 20mm
Venture 500,600 1997-99	R	7 1/8" x 25mm
Venture 600,700,500 XL 2000	R	7 1/8" x 25mm
Venture - All 1999-00	F/M	5 1/4" x 1"
	R	7" OD x 20mm
VT 500/600/700 1998-00	F/M	3.325" OD
VK 540 1988-97	F/M	3.325" OD
VK 540 1987-99	R	7" OD x 20mm
VK 540 1988-00	F/M	5 1/8" OD
VMX 540 1983-87	R	7" OD x 20mm
	F/M	5 1/8" OD
VT 480 1991-99	R	7" OD x 20mm
	F/M	5 1/8" OD
	F/M	3.325" OD
VX 500/600 1994-97	F/M	5 1/8" OD
VX 500,600,700 1994-99	R	7" OD x 20mm
VX 750,800 1992-97	F/M	5 1/8" OD
VX 800 1994-97	R	7" OD x 20mm
VX 800 1995-96	F/M	5 1/8" OD
XL 540 1985-90	R	7" OD x 20mm
	F/M	5 1/8" OD

Refer to page 129 for idler wheel photos

SKI-DOO		SIZE (OD X ID)
Alpine 1988-89	F/M	5 5/8" OD
Alpine 1995	F/M	5 5/8" OD
Apline II 1988-89	F/M	5 3/8" OD
Blizzard 5500,9500 1979	R	7 1/2" x 25mm
Blizzard 5500,7500, 9500 1980-81	R	7 1/2" x 25mm
Blizzard 9500 1982	R	7 1/2" x 25mm
Blizzard 9700 1983-84	R	7 1/2" x 25mm
Citation LS/LSE 1985-88	R	7 1/2" x 25mm
Citation/LS 1985-89	F/M	5 5/8" OD
Citation LS, LSE 1985-87	F/M	5 3/8" OD
Citation SL, LSE 1988	F/M	5 3/8" OD
Citation 1985-88	F/M	5 3/8" OD
Escapade 1988	F/M	5 5/8" OD
	F/M	5 3/8" OD
Everest 1980-83	R	7 1/2" x 25mm
F/440 L/C /583/670 1997	F/M	5 3/8" OD
Formula MX's 1985-93	R	7 1/2" x 25mm
Formula MX/III/XTCR/Plus/ II/E/EFI/X/XTC/SP/SS 1985-93	F/M	5 5/8" OD

SKI-DOO		SIZE (OD X ID)
Formula MX/Plus/SP/SS 1985	F/M	5 3/8" OD
Formula MX/Plus/SP 1986	F/M	5 3/8" OD
Formula MX/MX LT/Plus '87-88	F/M	5 3/8" OD
Formula Mach I/Plus/Plus LT '89	F/M	5 3/8" OD
Formula 500 Plus/MX/MX LT/ MX LT (2)/Mach I/Mach I XTC/ Plus/Plus LT/Plus LT (2) 1990	F/M	5 3/8" OD
Formula Mach I/Mach I XTC/MX/ MX XTC/Plus/Plus XTC '91-92	F/M	5 3/8" OD
Formula - All 1993	F/M	5 3/8" OD
Formula Mach I 1994-95	F/M	5 3/8" OD
Formula S/SL/SLS/SS/ST/STX/ STX II/ STX LT/III/III LTZ '94-96	F/M	5 5/8" OD
Formula S/SL/SLS 1995-96	F/M	5 3/8" x 25mm
	R	6 7/16" OD
Formula SS/ST/STX/LTZ '94-95	R	7 1/2" x 25mm
Formula SS/STX/LTZ '96-97	F/M	5 3/8" x 25mm
	R	6 7/16" OD
Formula III 1995-97	F/M	5 3/8" OD
Formula 500/DLX/583 1997	F/M	5 3/8" OD
Grand Lux LC 1985-86	F/M	5 3/8" OD
Grand Touring 1985-93	R	7 1/2" x 25mm
	F/M	5 5/8" OD
Grand Tour 470/583/SE/XTC 94-95	R	7 1/2" x 25mm
Grand Touring SE 1994-95	F/M	5 3/8" OD
Grand Tour 470/580/SE/XTC 94-97	F/M	5 5/8" OD
Machs (All) 1985-93	R	7 1/2" x 25mm
Mach I/III/XTC 1985-93	F/M	5 5/8" OD
Mach I/Z 1994-95	R	7 1/2" x 25mm
Mach I/Z 1996-97	F/M	5 3/8" OD
Mach Z 1994-95	F/M	5 3/8" OD
Mach I/Z/LT 1994-97	F/M	5 5/8" OD
Mach I/Z/LT 1996-97	F/M	5 3/8" x 25mm
	R	6 7/16" OD
MX 1981-84	R	7 1/2" x 25mm
MX 1989	F/M	5 3/8" OD
MX 1994-95	F/M	5 3/8" OD
MX/Z/470/583/670 1994-96	F/M	5 5/8" OD
MXZ 1994-95	F/M	5 3/8" OD
MXZ 440/583/670 1996	F/M	5 3/8" OD
MXZ 440,583,670 1996-97	F/M	5 3/8" x 25mm
	R	6 7/16" OD
MXZ 440 1997	F/M	5 3/8" OD
MXZX 440 1997	F/M	5 3/8" OD
Safari 1984	R	7 1/2" x 25mm
Safari 1984-89	F/M	5 5/8" OD
Safari 1985-88, 93-95	R	7 1/2" x 25mm
Safari 1991-93	F/M	5 3/8" OD
Safari 377, 377-E, SS25 1984	F/M	5 3/8" OD
Safari 377, 377-E 1985-88	F/M	5 3/8" OD
Safari 447, 447E - SS-25 1984	F/M	5 3/8" OD
Safari 447 1985-86	F/M	5 3/8" OD
Safari 503/503R 1988	F/M	5 3/8" OD
Safari L/DL/503 Rally 1993	F/M	5 5/8" OD
Skandic 503 1987	F/M	5 3/8" OD
Skandic 1987	F/M	5 5/8" OD
Skandic 1993	R	7 1/2" x 25mm
Skandic II 1993	F/M	5 3/8" OD
Skandic II/377R/503 1993	F/M	5 5/8" OD
Skandic 380/500/WT 1995-97	F/M	5 3/8" OD
Skandic 380/500 1998-99	F/M	5 3/8" OD
SS25 1984	R	7 1/2" x 25mm
SS25 1984	F/M	5 5/8" OD
ST 1994-95	F/M	5 3/8" OD
STX 1994-95	F/M	5 3/8" OD
Stratos/E 1988	F/M	5 3/8" OD
Stratos/E 1988	F/M	5 5/8" OD
Summit 1994-95	R	7 1/2" x 25mm
	F/M	5 5/8" OD
Summit 1996-97	F/M	5 3/8" OD
Summit 470/583 1994-95	F/M	5 3/8" OD
Touring E/LT/LE/SLE 1995-97	F/M	5 3/8" OD
Touring E/LT/SLE 1998-99	F/M	5 3/8" OD
Tundra LT 1995-97	F/M	5 5/8" OD
Tundra II LT 1995-99	F/M	5 3/8" OD
Z 1994-95	F/M	5 3/8" OD

QUICK REFERENCE			
IDLER WHEELS			
AXLE INSERT			
DIAM	SIZE	PART #	PRICE
2 3/4	5/8	#581-945	\$14.00
3 1/4	5/8	#581-943	\$16.00
4 1/4	5/8	#581-171	\$23.95
4 5/8	no insert = 1"	#581-272	\$23.95
5 1/4	3/4	#581-174	\$27.95
5 3/8	5/8	#581-168	\$27.95
5 11/16	5/8	#581-175	\$27.95
5 7/8	3/4	#581-176	\$27.95
6 3/8	3/4	#581-177	\$27.95
7 1/8	3/4	#581-179	\$28.95
7.875	3/4	#581-780	\$28.95
8	3/4	#581-781	\$29.95
INSERT SETS			
5/8		#582-625	\$1.95
3/4		#582-750	\$1.95
BEARINGS			
Standard 6205-2RS		#590-050	\$4.95
Genuine NTN 6205-2RS		#590-052	\$7.95
Standard 6004-2RS		#590-651	\$4.95
Genuine NTN 6004-2RS		#590-652	\$8.95

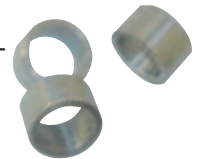
ALUMINUM WHEEL COVERS

Billet aluminum bearing covers - look much better than a washer. Includes bolts & lock washers. Sold per pair.
#581-942 \$24.95



IDLER BEARING BUSHING

Used to downsize an idler wheel with a 1" (6205) bearing to fit a 20mm axle. Sold individually.
#581-941 \$8.00



IDLER WHEEL CIRCLIPS \$1.95

Wheels w/6004-2RS Bearings #574-692
Wheels w/6204-2RS Bearings #574-693
Wheels w/6205-2RS Bearings #574-694



BEARINGS



BEARING #	DESCRIPTION	PRICE
Idler Wheels		
#590-050	6205-2RS	\$4.95
#590-163	6202-2RS	\$3.95
#590-654	6204-2RS	\$4.95
#590-651	6004-2RS	\$4.95
Shafts		
#590-160	1"ID w/Lock Collar	\$10.95
#590-161	1"ID w/Set Screws	\$10.95
#590-164	1"ID w/Lock Collar & Wide Inner Race	\$18.95
#590-114	7/8"ID w/Lock Collar	\$10.95

IDLER WHEEL BUSHINGS

Plastic \$1.95



5/8" I.D. (small & large O.D. kit) #582-625
3/4" I.D. (small & large O.D. kit) #582-750